

A Guide to using
Family Tree Analyser
and
Lost Cousins



What is Lost Cousins?

Lost Cousins is a website designed to connect people with other family historians who are related to the same family. It does this by matching the census records mainly the UK 1881 census and the US 1880 census. It is 100% accurate as if you and someone else are a blood relative of the same person on the census then you are cousins. So, unlike other sites, there is no guessing as to similar sounding names or places, just a 100% accurate way of finding others who are researching the same family.

This can be important as people who are researching the same family are not only your cousins, they have likely approached that search from a different branch so they may well have found information or broken through a brick wall that you are still stuck on. They may also be part of the branch that inherited family photos or documents. So, connecting with these “Lost Cousins” can really help your research.

Lost Cousins is free to search and free to join. Join also allows you to get the award-winning newsletter that comes out 2-3 times a month. You can also choose to subscribe to the website with a £10/year subscription that supports the site and gives you access to the details of your matches.

How does FTAnalyzer work with Lost Cousins?

FTAnalyzer provides various reports on census records you have already found that shows your ancestors on the census you could upload to Lost Cousins. Starting with Windows v7.3 and Mac v1.2 there is a feature where you can automatically upload your Census records to the Lost Cousins website with minimal effort.

Outline of Simple Steps to upload your data to Lost Cousins

1. First if you aren't already a Lost Cousins member visit the website www.lostcousins.com and register

The screenshot shows the registration page for Lost Cousins. The header includes the logo and tagline "PUTTING RELATIVES IN TOUCH". A navigation menu on the left lists options like Home, Log-in, Password reminder, Change password, Change email address, JOIN NOW, Latest newsletter, and Newsflash. A blue box highlights "Free to search and free to join!" with a "FREE" starburst and a "MORE" button. Below this are sections for "Information" and "Tools". The main content area is titled "Registration" and includes a "LOG-IN" button for existing members. The registration form itself is titled "Account Details" and contains several sections: "Primary email address" and "Confirm email" (with a note that the email will be the log-in name); "Title (Mr./Mrs./Ms. etc)", "Forename", and "Surname"; "Address 1", "Address 2", "Town / City", "County / State / Province", "ZIP / Postcode", and "Country" (set to United Kingdom); "Secondary email address" (with a note to provide an alternative if possible); "My beneficiary" (with a note to enter their email address if someone should take over research); and a dropdown menu for "How did you hear about lost cousins?".

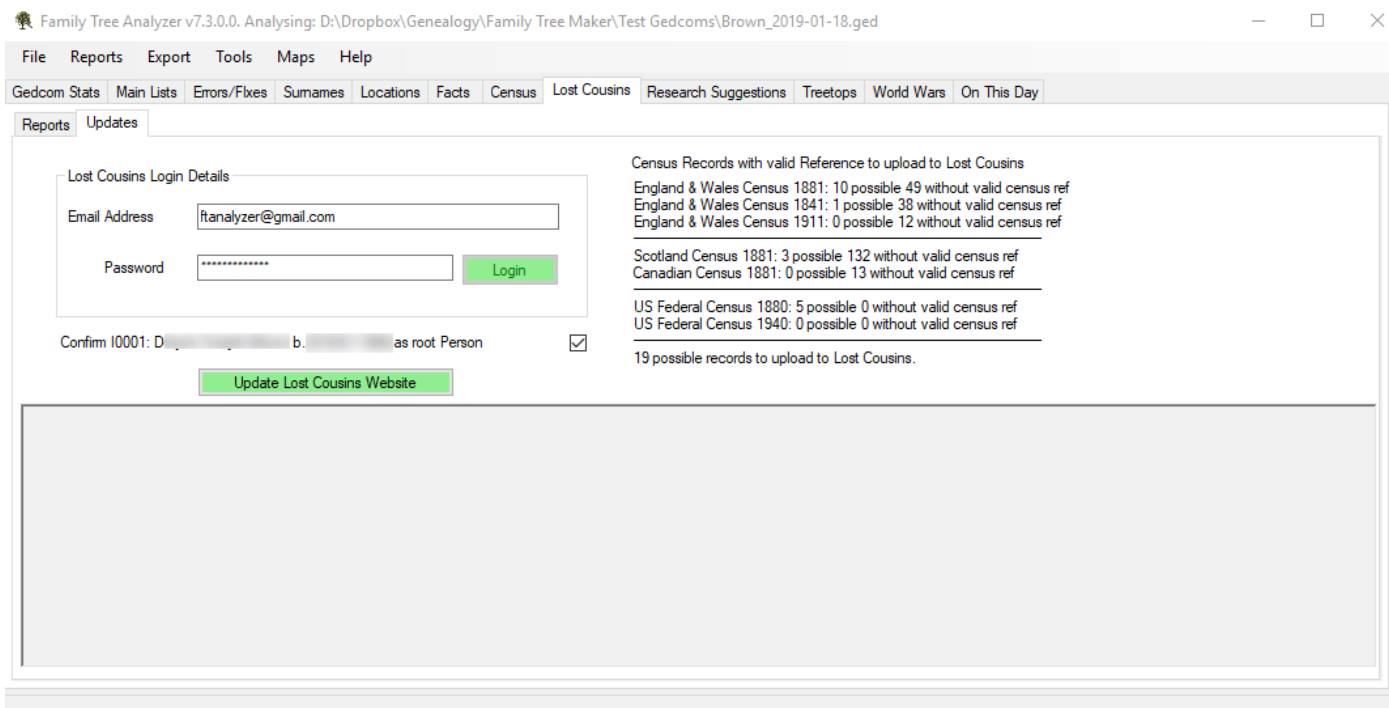
2. Load your GEDCOM into FTAnalyzer – [see Part 1 of guide series for information](#)

- Select the Lost Cousins Tab – this shows you information about the census records you have and allows you to view reports that shows you the possible people you could upload to Lost Cousins

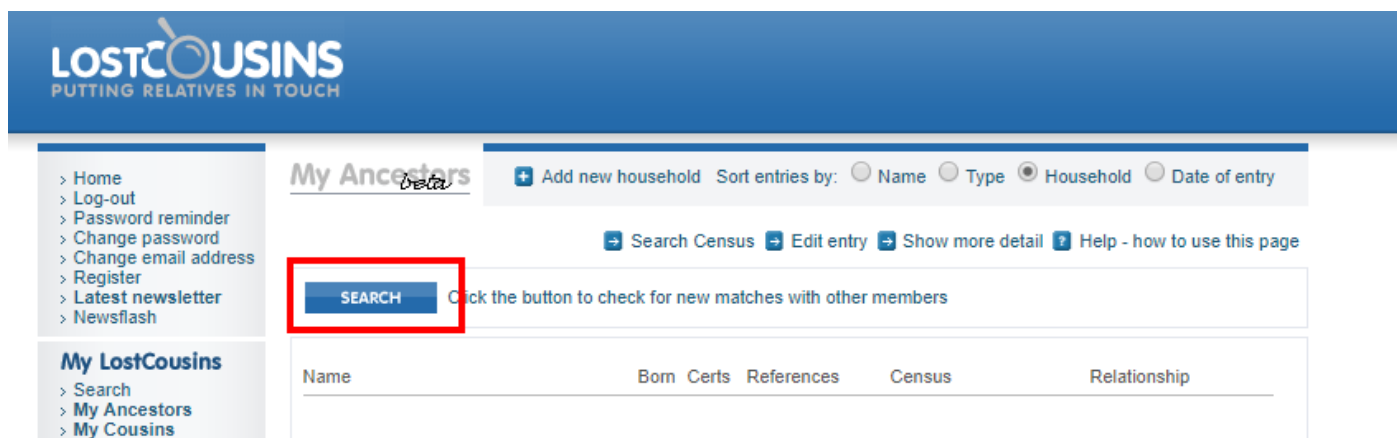
- Select the Updates tab and login to your Lost Cousins account – this allows FTAnalyzer to upload data to your personal page.

- Confirm the root person – The root person is usually yourself or the person everyone in the tree is related to. Lost Cousins looks to confirm whether people are blood relatives or related by marriage, so the root person needs to be correct to ensure the relationship type is set correctly. If it is correct just tick the box if not follow the instructions in [part 1 of the guides](#) to changing the root person.

- Click the green “Update Lost Cousins Website” button.



- Once the update process has completed the website will open in your browser allowing you to view your results on the Lost Cousins website and click search to check for new matches.



- Note on the “My Ancestors” page there is a little arrow to the right of each name. Clicking on this arrow will open the record in Find My Past so you can confirm it’s the right record. It is recommended you do this for each household to make sure you have no typos in your census references. As if the census reference is wrong you aren’t going to get a match.
- Contact any new matches to see/learn more about your family

Background Steps

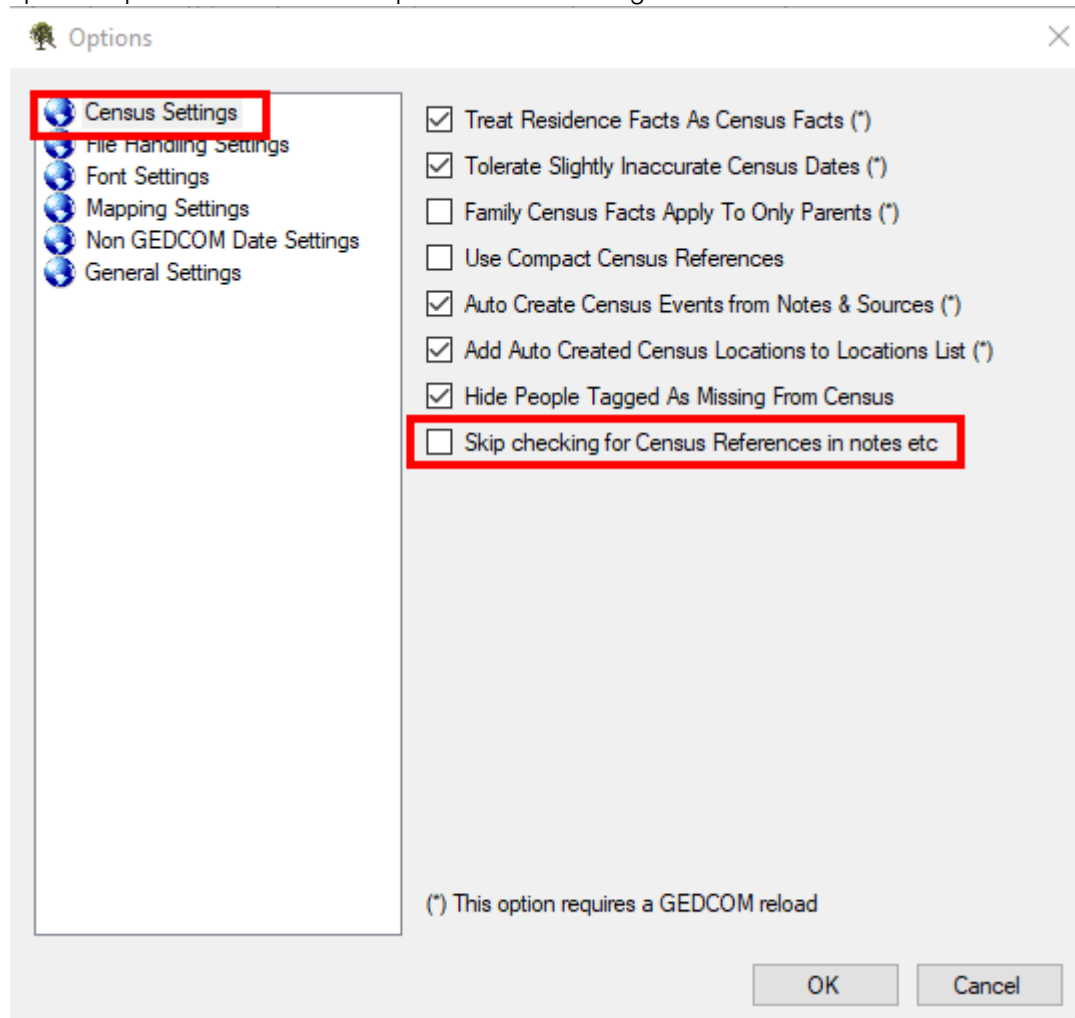
Before you can successfully upload data into Lost Cousins there’s a few things you need to have done.

- You must have found your relatives on the census. This may seem blindingly obvious but if you haven’t found your relative on the census you aren’t going to be able to make a match.
- You need to have a census reference from the census entered in your tree against the census record or stored in the notes or the source record.
 - Note that many websites such as Ancestry and Find My Past and many family history programs will automatically record the census reference in your tree when you merge the data.
 - FTAnalyzer will try to automatically detect these census references and will report in the GEDCOM loading screen and in the Lost Cousins screens how many it found
 - The references found need to be considered valid to be uploaded to Lost Cousins.

- d. If you have already entered records at Lost Cousins, then FTAnalyzer will attempt to match the entries against your records on the Lost Cousins website.
3. If you don't yet have any census records or census references then you can use the reports highlighted on the Lost Cousins Tab (see image above) to find the records on Ancestry/FindMyPast/FamilySearch and FreeCen by simply double clicking on a census record in those reports it will open a search results form on the chosen website.
 - a. You then find the census record/reference and update your tree with that information, so it is permanently recorded on your file.
 - b. The next GEDCOM you export from your tree will then contain these references and can be uploaded automatically.
4. If you have census references that aren't being recognised please use the unrecognised census references report and raise an issue at www.ftanalyzer.com/issues so I can try to add recognition for the format to a future version.

Suggested Method of Working

Before you start make sure you have turned on the option to check for census references on loading. Updating records to Lost Cousins requires a census reference to be identified. There is an option to skip this step which speeds up load times but is required when working on this section.



The Lost Cousins Reports Tab gives you information on the right-hand side on the number of census records you have found and whether you have uploaded them to Lost Cousins website.

Family Tree Analyzer v7.3.0.0. Analysing: D:\Dropbox\Genealogy\Family Tree Maker\Test Gedcoms\Brown_2019-01-18.ged

File Reports Export Tools Maps Help

Gedcom Stats Main Lists Errors/Fixes Surnames Locations Facts Census **Lost Cousins** Research Suggestions Treetops World Wars On This Day

Reports Updates

Relationship Types
 Direct Ancestors Related by Marriage Unknown
 Blood Relations Descendants
 Married to Blood or Direct Linked through Marriages

1881 England & Wales Census 1881 Scotland Census
 1841 England & Wales Census 1911 Ireland Census 1880 US Census
 1911 England & Wales Census 1881 Canada Census 1940 US Census

Show already entered to Lost Cousins (unticked = show those to yet to be entered)

Lost Cousins with no Country Lost Cousins Duplicate Facts Lost Cousins w/bad Census

Referrals
 Select Individual
 Limit to Common Relatives

Lost Cousins facts recorded:
 1881 England & Wales Census: 302 Found, 59 Missing
 1841 England & Wales Census: 85 Found, 39 Missing
 1911 England & Wales Census: 532 Found, 12 Missing
 1881 Scotland Census: 154 Found, 135 Missing
 1911 Ireland Census: 0 Found, 0 Missing
 1881 Canada Census: 0 Found, 13 Missing
 1880 US Census: 0 Found, 5 Missing
 1940 US Census: 0 Found, 0 Missing
 Totals: 1073 Found, 263 Missing
 You have 263 Census facts with no Lost Cousins fact
 Click the Lost Cousins website link to add them today.

[Visit the Lost Cousins Website](#) [Visit the Lost Cousins Forum](#)

You can use the report buttons to view what's missing a Lost Cousins entry and check the Census reference field to see if a census reference has been identified or not.

1881 England & Wales Census Records on file to enter into Lost Cousins website

Show Location on Google Map Show Location on OS Map Census search using: Ancestry Region: .co.uk

tion	Death Date	DeathLocation	Husband / Wife / Child	Relation	Relation To Root	Census Reference	Ahnentafel
Com...	30 OCT 1936	Lanhargy, Lin...	Husband	Blood Relation	3rd cousin 4 times rem...		0
ne. ...	16 MAY 1927	Dunoon, Yelv...	Wife	Blood Relation	3rd cousin 4 times rem...		0
ther...	12 OCT 1952	South Pether...	Husband	Blood Relation	2nd cousin 4 times rem...		0
ne. ...	BET 1911 AND 1981		Wife	Blood Relation	3rd cousin 4 times rem...		0
Com...	BET 1911 AND 1975		Wife	Blood Relation	2nd cousin 4 times rem...		0
Com...	ABT JUN 1966	Bury St Edmu...	Husband	Blood Relation	3rd cousin 3 times rem...		0
Com...	ABT SEP 1954	St Germans, ...	Husband	Blood Relation	3rd cousin 3 times rem...		0
Essex...	BET 1881 AND 1979		Child	Blood Relation	1st cousin 3 times rem...		0
Lon...	BET 1881 AND 1946		Husband	Blood Relation	3rd great granduncle	Unknown Census Ref: Database online.	0
Com...	BET 1911 AND 1988		Wife	Blood Relation	3rd cousin 3 times rem...		0
ther...	BET 1911 AND 1974		Wife	Blood Relation	2nd cousin 4 times rem...		0
ther...	BET 1911 AND 1978		Wife	Blood Relation	2nd cousin 4 times rem...		0
Com...	BET 1939 AND 1987		Wife	Blood Relation	3rd cousin 3 times rem...		0
Com...	BET 1911 AND 1970		Wife	Blood Relation	3rd cousin 4 times rem...		0
ss, C...	BET 1911 AND 1960		Wife	Marr to Direct...		Piece: 2276, Folio: 83, Page: 12	0
kesl...	ABT DEC 1951	Nottingham, ...	Child	Blood Relation	1st cousin 3 times rem...	Unknown Census Ref: Database online.	0
kesl...	BET 1911 AND 1983		Child	Blood Relation	1st cousin 3 times rem...	Unknown Census Ref: Database online.	0
kesl...	ABT DEC 1951	Nottingham, ...	Husband	Blood Relation	1st cousin 3 times rem...	Unknown Census Ref: Database online.	0
kesl...	BET 1911 AND 1983		Husband	Blood Relation	1st cousin 3 times rem...	Unknown Census Ref: Database online.	0
. Ess...	BET 1901 AND 1955		Husband	Blood Relation	2nd great granduncle	Unknown Census Ref: Database online.	0
own....	BET 1901 AND 1983		Child	Blood Relation	2nd cousin 3 times rem...	Unknown Census Ref: Database online.	0
Mid...	BET 1901 AND 1987		Child	Blood Relation	2nd cousin 3 times rem...	Unknown Census Ref: Database online.	0

83 Rows containing 59 Individuals and 45 Families. Double click to search Ancestry for this person's census record. Shift Double click to display their facts.

In this example there are missing census references – an example is shown in yellow, a valid census reference shown in green and unknown census references – an example is shown in red.

For Unknown Census references it may be that this is because the program hasn't recognised a valid reference format or it maybe there is something slightly wrong with the format entered that is preventing it being recognised. If you think the format is right but not being picked up please raise an issue at www.ftanalyzer.com so this can be fixed in a future version.

Entering and Fixing Census References

In your tree program you can add a reference either in an ancestor's notes or as part of a source citation – if you use Ancestry or Find My Past and merge records it's typically a source citation that is used to record the reference automatically. See Notes below for some typical formats.

Simply by adding this to the census record description, to the source citation for that census or even just to the note for an individual will flag that reference against that individual within FTAnalyzer. So really all you need to do is to find the census record online and cut and paste the reference text into the person's record.

Finding a Census Reference

The easiest way to find a census reference is to use the Research Suggestions tab of FTAnalyzer. Select your preferred website from the drop down and double click one of the coloured buttons to auto search for that record. Then when you've found it follow the instructions above to enter the reference into your ancestor's details.

Notes:

Example Census Reference Formats

FTAnalyzer attempts to recognise a wide variety of census references from short reference codes to long descriptive full citation references. Please report formats that aren't being recognised so they can be added to the list.

England and Wales 1881 Census:

Class: RG11; Piece: 2953; Folio: 63; Page: 8; GSU roll: 1341707

US 1880 Census: (FamilySearch style)

United States Census, 1880, database with images, FamilySearch (<https://familysearch.org/ark:/61903/1:1:M4J9-Z86> : 12 August 2017), John Smith, Spring Hill, Barbour, Alabama, United States; citing enumeration district ED 13, sheet 155B, NARA microfilm publication T9 (Washington D.C.: National Archives and Records Administration, n.d.), roll 0002; FHL microfilm 1,254,002.